

**Arithmetic**

$256 + 372 =$

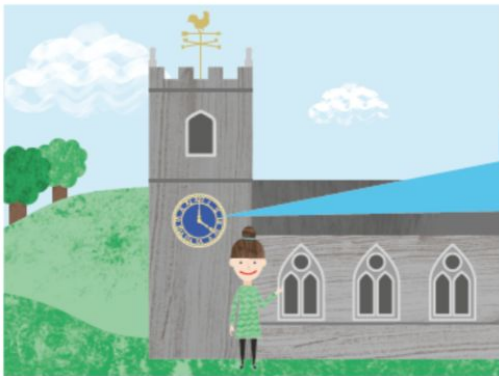
$408 - 267 =$

$4 \times 9 =$

# Telling the Time

## Lesson 7

### In Focus



What time is it now?

IV is often shown as IIII on clocks.



### Let's Learn

1

What time is it now?

It is 4 o'clock in the afternoon.  
We write it as 4:00 p.m.



The time is 16:00.



2



It is half past 7 in the morning.  
We write it as 7:30 a.m.

3



It is 15 minutes to 1 in the afternoon.  
We write it as 12:45 p.m.

It is past  
noon.



4





It is 5 minutes to midnight.  
We write it to 11:55 p.m.



It is almost  
midnight.







## Guided Practice

Tell the time.

(a)   9:00 p.m.

(b)   4:30 p.m.

(c)   5:15 p.m.

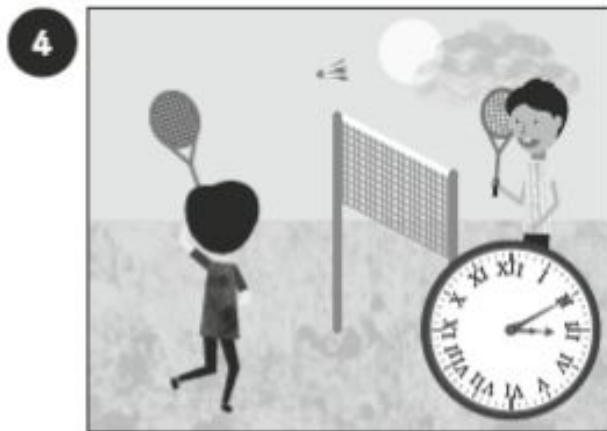
(d)   9:55 a.m.

1 = I	2 = II
3 = III	4 = IV
5 = V	6 = VI
7 = VII	8 = VIII
9 = IX	10 = X
11 = XI	12 = XII

# Worksheet 7

## Telling the Time

Tell the time using a.m. or p.m.



## Answers

1)

2)

3)

4)