

Arithmetic

$$456 + 249 =$$

$$64 \div 8 =$$

$$3 \times 24 =$$

Measuring Time in Minutes

Lesson
15

In Focus

A game of football started at 11:20 a.m.
It lasted for 45 minutes.
At what time did the game end?



Let's Learn

- 1 What is 45 minutes after 11:20 a.m.?



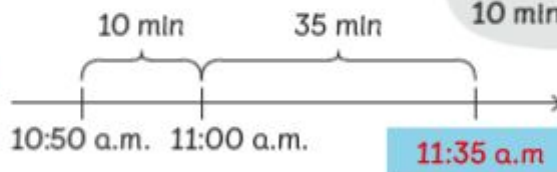
45 min
40 min 5 min

The game ended at 12:05 p.m.

In 40 minutes,
it will be 12 noon.



- 2 What if the game started at 10:50 a.m.?



45 min
10 min 35 min

The game would end
at **11:35 a.m.**

In 10 minutes,
it will be 11 a.m.



Guided Practice

1 Find the time each activity ended.

Suggest an activity that takes that long.



(a) start



55 minutes

end

1:55

(b)



35 minutes

Which activity takes the longest time?

2:45



(c)



40 minutes

5:15

Which activity takes the least time?



(d)



20 minutes

6:15

2 At what time did these activities end?

Which activity ends earlier?



(a) start



40 minutes

end

12:47

(b)



30 minutes

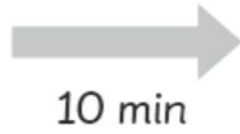
8:19

Worksheet 15

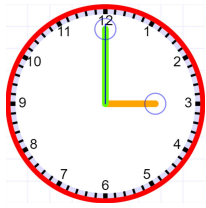
Measuring Time in Minutes

Write down which clock shows the correct time and write the time down as well.

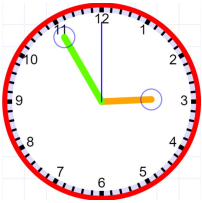
Example



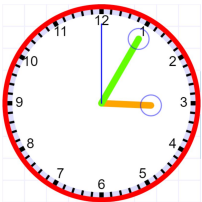
A -



B -



C -



Answer

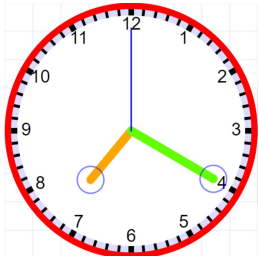
A - 3:00

a)

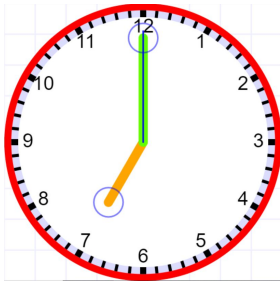


50 min

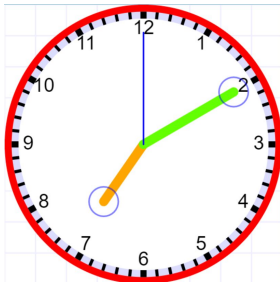
A -



B -

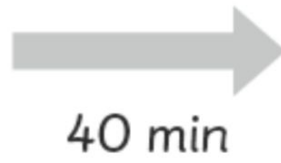


C -



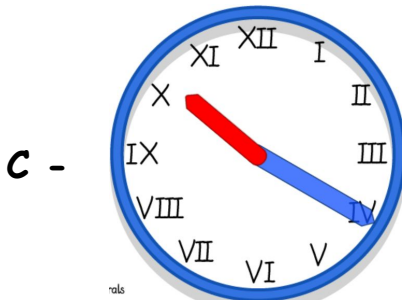
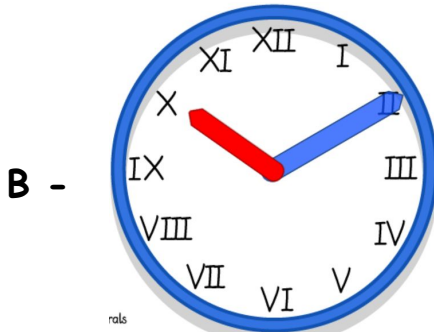
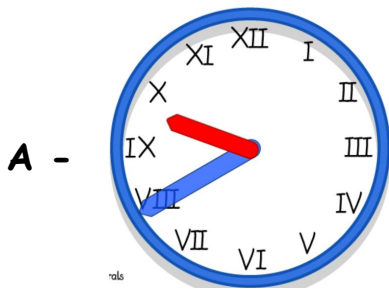
Answer

b)



Roman numerals

1 = I, 2 = II, 3 = III, 4 = IV, 5 = V, 6 = VI, 7 = VII, 8 = VIII, 9 = IX, 10 = X, 11 = XI, 12 = XII



Answer

c)

11:51



25 min

A -

12:16

B -

12:06

C -

12:15

Answer

Extension

Explain why our number bonds to 60 are important for time only and not for money.