

Name:

Date:

## Science Assessment Year 6: Evolution and Inheritance



### Evolution and Fossils

1. Explain what evolution means.

.....

1 mark

2. Explain what a fossil is.

.....

1 mark

3. On average, how long does it take to make a fossil? Circle **one**.

100 years

1,000,000 years

10,000 years

1000 years

1 mark

4. Describe one way in which an animal or insect's body can be preserved in the fossilisation process.

.....

1 mark

5. How can we use fossils as evidence of evolution?

.....

1 mark

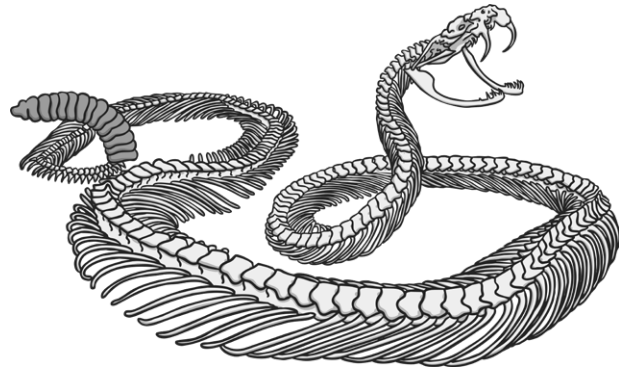
Total for this page

6. Compare the snake fossil with the snake skeleton and write down one similarity and one difference you can see between them.

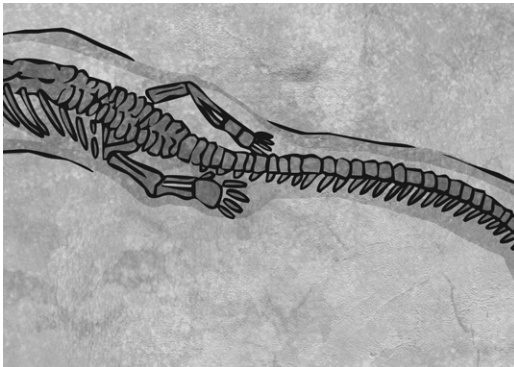
### Early Snake Fossils



### Modern Day Snake Skeleton



Close up of the back end:



Similarity:

.....

.....

.....

1 mark

Difference:

.....

.....

.....

1 mark

Total for this page

---

## Inheritance

7. Explain what inheritance means.

1 mark

8. True or false?

Inherited characteristics are always physical?

1 mark

9. True or false?

A child gets half of its characteristics from its mother and the other half from its father.

1 mark

10. Explain why siblings who inherit the same characteristics from their parents are not identical to each other.

1 mark

Total for this page

11. Draw lines to sort these characteristics into inherited characteristics and acquired characteristics.

Characteristics
Eye colour
Roller skating
The ability to roll your tongue
Natural blonde hair
Reading books
Playing guitar

Type
Inherited
Acquired

3 marks



### Adaptation

12. Explain what adaptation is.

.....

1 mark

13. Give one example of how an animal or plant has adapted to suit its environment.

.....

1 mark

Total for this page

---

14. Give two ways a penguin is suited to swimming under the water.

.....

1 mark

15. Explain how adaptation may lead to evolution.

.....

1 mark

Total for  
this page