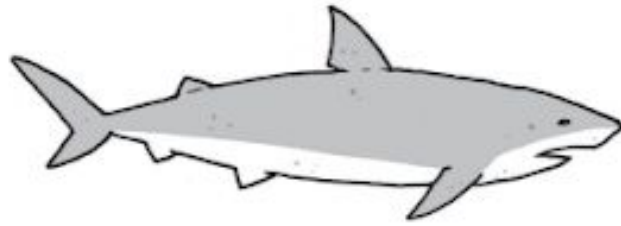


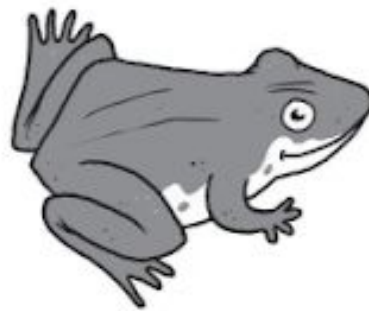
Like an Animal

Joan Poulson

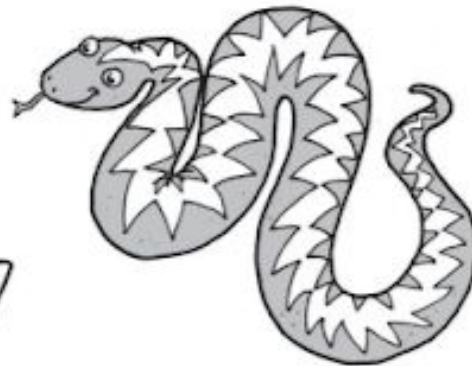
- 1 I snarl and snap
around the park
pretend that I'm a
strong, fierce shark.



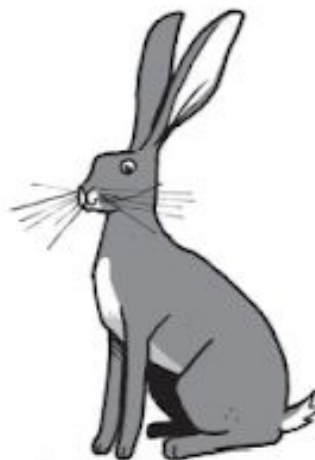
- 5 I jump and hop
off a fallen log
pretend that I'm a
bright-eyed frog.



- 9 I slide zigzag
beside the lake
pretend that I'm a
patterned snake.



- 13 I leap and spring,
bound everywhere
pretend that I'm a
long-legged hare.



Challenge 1

- 1 Write the words from the poem that rhyme with:

park _____

log _____

lake _____

- 2 "I leap and spring,
bound everywhere"

The word "bound" is closest in meaning to (tick **one**):

burn. sleep. jump. sprint.

- 3 Where does the child pretend to be a snake?

- 4 Find and copy **two** words that describe the shark.

- 5 Finish the verse.

I slither and slide,

leave a silver trail

pretend that I'm

a brown-shelled _____.

How do you know which animal name to write?

- 6 Why do you think the child was moving in so many different ways in the poem?

Challenge 1

Write the question number and then answer the questions:

Answers: