

Plant Life Cycles

Cross-Curricular Focus: Life Science

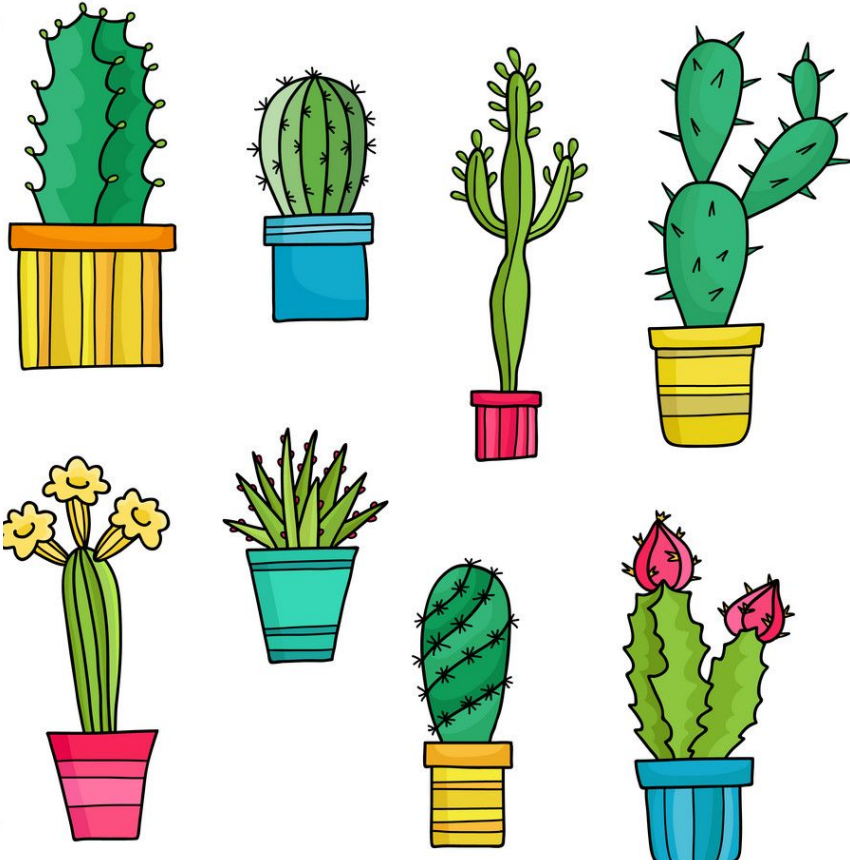


Every living thing goes through **changes**. Living things grow through different stages. Then they reach the end of their life cycles and die. There are many kinds of plants. Each kind has its own **life cycle**.

Many plants start their life cycles as a seed. The seed needs certain things or it will not grow into a plant. Sometimes seeds wait in the ground until they can get the things they need. They wait for warmth from the sun. They wait for water. When they have what they need, they start to grow. A tiny little sprout will push out of each seed. The sprouts stretch up until they poke through the dirt and into the air.

The plants continue to grow when they get sunshine and water. The stems grow taller and leaves unfold. More leaves and stems grow on the main stems. The adult plants grow flowers. The flowers of many plants make fruit. The fruit has seeds inside it so more new plants can grow.

New plants look like their parent plants. Seeds from a parent plant will grow into the same kind of plant as the parent. When a seed begins to grow, it is the beginning of another plant life cycle.



Questions:

1. What is the process of living, growing, changing and dying called?
2. How do many plants begin?
3. What two things does a seed need to have with it in the ground to be able to grow?
4. Where can you usually find seeds in an adult plant?
5. What kind of plant will a seed grow into?