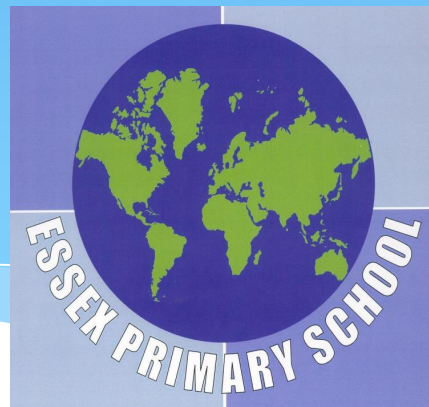


Essex Primary School Year 6 Expectations, 2020-21

'Parental involvement in children's education from an early age has a significant effect on educational achievement, and continues to do so into adolescence and adulthood'



The Year 6 Team

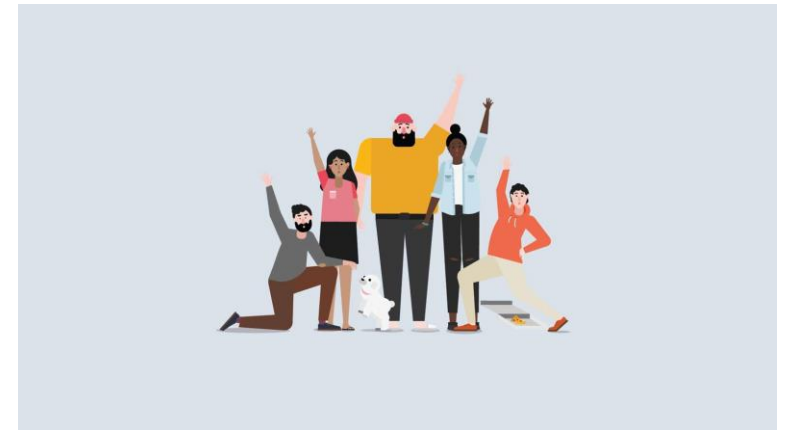
Mrs Chowdhury -Phase Leader

Ms Hamida (Year Group Lead)- 6H

Ms Rasul - 6R

Mr Quist - 6Q

Ms Islam - 6I



Year 6 Expectations

Punctuality and Attendance

Good attendance and punctuality is essential for pupils to achieve their full educational potential. It is also vital for pupils to form good habits for later life.

We have staggered start times for every year group. For year 6, the gates open at 8.45am. We expect children to be in school on time every morning. When they arrive the class teacher sets Early Bird work for them which gets their brains ticking and sets them off for a good day of learning.

School finishes at 3.00pm for year 6.

However, please do not send your child into school if they have any of the following symptoms:

- * high temperature
- * new, continuous cough
- * loss or change to your sense of smell or taste



Year 6 Expectations

A reminder that children need to be wearing their PE kits on the day they have PE. Year 6 have PE on Tuesday and Thursday.

Winter Uniform: Reception to Year 6

Now that it is getting colder, all pupils are expected to be dressed in their winter uniforms.

Boy's Uniform	Girl's Uniform
Blue trousers - not jogging bottoms White school shirt or white polo shirt School Jumper or School Fleece Black or grey socks Black school shoes - no trainers Warm waterproof winter coat	Blue trousers - not jogging bottoms or leggings White school shirt or white polo shirt Blue skirt Blue pinafore dress School Jumper or School Fleece White socks or blue tights Black school shoes - no trainers Warm waterproof winter coat

The blue summer dresses are made from a light cotton material and do not offer sufficient protection against the cold.

Pupils may come to school wearing a pair of boots but must ensure that they have their school shoes to change into once they are in school. School shoes can be left in school.



Please can you ensure that your child has the correct school uniform.

Key Stage 2 SATs 2021

The key stage 2 tests are timetabled from:

Monday 10th May to Thursday 14th May 2021.

- * This academic year, Eid al-Fitr is due to begin on the evening of Wednesday 12 May which falls on the SATs week. We understand that Eid al-Fitr is an important festival to Muslims however we will keep school open so year 6 pupils can come into school and complete their test. Once their test has ended, we will ensure that they go home to celebrate Eid al-Fitr with the rest of the family.

Saturday School

- * We have also arranged Saturday School to further push our pupils so they reach their full potential. Pupils selected have been invited already and the first session starts this Saturday.

KS2 SATs 2021 TESTING PERIOD

Monday May 10th 2021

1. SPaG Test (Grammar & Punctuation) - 45 mins
2. SPaG Test (Spelling) - 20 minutes



Tuesday May 11th 2021

1. Reading Test - 60 mins



Wednesday May 12th 2021

1. Maths Paper 1 (Arithmetic) - 30 mins
2. Maths Paper 2 (Reasoning) - 40 mins



Thursday May 13th 2021

1. Maths Paper 3 (Reasoning) - 40 mins

How can you support your child?

Have high expectations at home. Encourage your child to complete their home to a good standard. Homework is set on Google Classroom every Friday and expected to be completed by Tuesday.

Provide them with a quiet place for them to complete their work, support them with the work and ensure they read every day.

Reading at Home

Pupils change their reading books at least every two weeks. We expect Year 6 pupils to read novels, therefore they may not finish the book in one sitting or a week. Books are now scanned out so that we can keep a record of what your child is reading. Books must be returned to school, there are fines for missing books.

We want them to read at home every day. We are keen for the children to progress in their reading, to do this they need to read aloud daily to an adult. We know our children CAN read fluently but they often struggle with comprehending questions. This means it is important you discuss the book with increasing depth through questioning them.

Questions are effective because they:

- Give children a purpose for reading
- Focus children's' attention on what they are to learn
- Help children to think actively as they read

Each pupil needs to write a short comment in their reading record. Where possible, we would like you to also write comments to communicate to the teachers how they are reading at home.



SATs Revision Books

At Essex Primary School, we are always looking for ways to help move children on in their learning. As a result, we will be purchasing 10 CGP Key Stage 2 English and Maths revision books for each Year 6 child to enable them to revise in school and at home.

Children will be asked to complete a page of a Revision workbook each day as part of their revision homework. These will be sent home during the Spring break for the children to continue their revision.

Each book costs approximately £4.00. However, the school will ask for a contribution of £10 per child for a set of ten books (only £1 each!).

We highly recommend them as an excellent resource in assisting us to help your child achieve their potential in the forthcoming SATS tests. We sincerely hope you will support your child's education. A letter to you will be sent soon regarding these excellent books.

Remote Learning

In the event of a confirmed case, small groups of children or class bubbles may need to self-isolate. In these cases, children must continue to learn at home. Remote learning (Blended Learning) is essential and this will support children to access high quality education.

The school is committed to teach children lessons via Zoom based on the learning they would have learnt at school. These sessions will be 30-40 mins long. Task will be set linked to this on Google Classroom for the children to complete after the session. They will need to submit work via Google Classroom which will be marked by teachers. You will be sent a schedule for Zoom sessions with passwords and usernames via Ping.

We want you to be prepared so that is why we have shared this information. Children will need a notepad, pencil, electronic device (laptop) and a quiet place to complete their sessions.



Fairplay House

Unfortunately, this academic year we will not be taking the pupils to the residential visit to Fairplay House. However, we have been very lucky to organise a day at school where the children will get to experience a day at Fairplay House. All expenses paid by the school. Following safety guidelines and careful planning, the instructors will deliver team building activities with year 6 bubbles. We will give you an update on the day on our school newsletter. Date: Monday 9th November 2020



Secondary School Applications

All applications were completed by the deadline 31st October 2020. **What happens next?**

- * Families now just need to wait until national offer day 1 March 2021
- * Online applicants via the eAdmissions portal will be sent an email with their offered school and will be advised to log into their account.
- * Paper applicants will be sent a letter that is posted on 1st March 2021.

- * Most offers will be your preferred first choice or second choice. However, for some families it is possible that none of their preferences can be offered. Then the local authority will allocate an alternative which will be named in the letter.

- * If you don't get a place at the school you prefer you still have the opportunity to lodge an **independent appeal**.

- * Everyone who applies for a school and is refused a place has the right of appeal.
- * Appeals are managed by Newham Independent Appeals Service and heard by an independent (community volunteer) panel.
- * Cases are heard in two stages the first is to determine if a mistake stopped your child being offered a place and the second stage is about personal, social and medical reasons.

- * There are high volumes of hearings and only a very few are successful. For secondary transfer for September 2020 entry, they had heard 217 appeals to date and only 3 were successful. **Be prepared!**

RSE: Relationship and Sex Education

Physical changes that occur during puberty.

Common changes

- growth of hair around genital areas, under arms
- development of sweat glands
- increased hormone levels which affect feelings/emotions
- changing body shapes

Male changes

- growth of hair on face, chest
- increased level of testosterone (aggression levels increase)
- sweat glands produce more sweat (increase in body odour)
- Voice drops (lowering/deepening of voice gradually happens)
- Testicles (balls) drop
- Wet dreams – ejaculation of semen during night.

Female changes

- development of breasts
- periods – menstruation, menstrual cycle
- weight gain
- widening of hips.
- increase level of oestrogen (stroppiness, mood swings)

RSE: Relationship and Sex Education

➤ **Key vocabulary**

- Gender
- Hormones
- Testosterone
- Genitals
- Voice
- Penis
- Semen
- Menstruation
- Periods
- Vagina
- Reproduction
- Reproductive organs
- Puberty

- Mood
- Oestrogen
- Deepening
- Testicles
- Ejaculation
- Sperm
- Menstrual cycle
- Breasts
- Widening
- Glands
- Body odour
- Development
- Uterus
- Pregnancy
- Facial
- Blood

- Bacteria
- Increased production
- Trusted adult
- Wash regularly
- Deodorant
- Hygiene
- Greasy
- Safety
- Alert
- Fallopian tubes
- Ovum
- Ovary
- Chest
- Thickening
- Sweat
- healthy

Thank you for attending and listening!

