

Everyone Valued
Everyone Challenged
Everyone Achieving



Attendance, Attention and Achievement



Ready Steady Reception!

At Essex we believe:

- Every child is unique.
- Play and talk is essential and a rich part of the learning process.



Forest School

We provide outdoor learning experiences to enhance children's learning.

Forest school promotes:

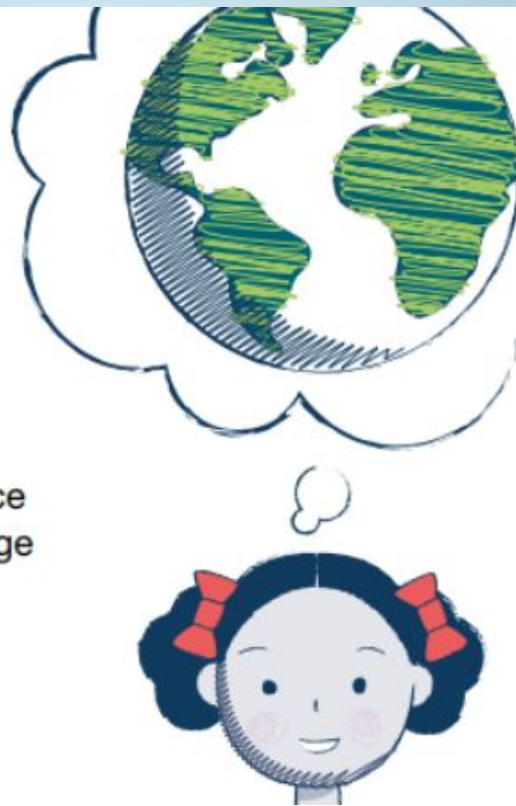
- Resilience
- Playing and exploring
- Language development
- Physical development
- Independence
- Problem solving skills
- Collaborative learning
- Critical thinking
- Social and emotional development



Development Matters

Non-statutory curriculum guidance
for the early years foundation stage

First published September 2020
Revised July 2021



In the Early Years at Essex Primary we plan our Early Years curriculum using the Early Years Outcomes. We also use the document Development Matters to support our teaching and learning.

Baseline Assessment



Baseline assessments are completed for all the children in Reception.

Schools will carry out the assessments within the first 6 weeks of starting school. All the assessments will be activity based and focused on pupils ability in

- language, communication and literacy
- mathematics

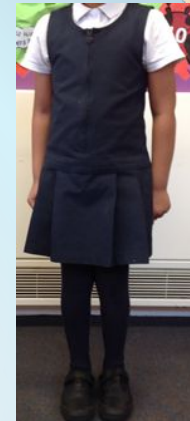
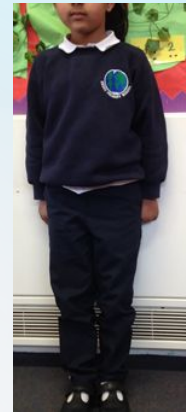
The assessments are age appropriate and will last approximately 20 minutes. Teachers will record the results.

School Uniform



Boy's Uniform

- Blue trousers – not jogging bottoms
- White school shirt or white polo shirt
- School Jumper or School Fleece
- Black or grey socks
- Black school shoes – no trainers
- Warm waterproof winter coat



Girl's Uniform

- Blue trousers – not jogging bottoms or leggings
- White school shirt or white polo shirt
- Blue skirt, Blue pinafore dress
- School Jumper or School Fleece
- White socks or blue tights
- Black school shoes – no trainers
- Warm waterproof winter coat
- Pupils may come to school wearing a pair of boots but must ensure that they have their school shoes to change into once they are in school. School shoes can be left in school.



Book Bag



Book bags must be brought to school every day with your child's reading book and their reading diary.

The school uniform and book bag can be bought from the uniform shop. (Ian Howard)

P.E. kit



P.E bags **MUST** be brought to school every Monday and taken back home on Friday.

It should consist of

- Shorts/ jogging bottoms
- T-shirt
- A pair of plimsolls or trainers

Children must change into their P.E. kit and wear different shoes for P.E. lesson.



Top tips to remember



Remember to bring your child's P.E kit to school every **Monday** and take it home every **Friday** to be washed.

Bring your child's book bag containing your reading book and reading diary to school **every day**.

Make sure **all** your child's belongings are clearly labelled with their name and class.

Support your child with their reading and talk about what they did at school.

Attendance



Make sure your child attends school everyday.

At Essex Primary School we take attendance very seriously, we monitor it daily to maintain a high attendance percentage. We remind parents and carers that it is their legal responsibility to ensure their child attends school regularly and punctually.

We celebrate the classes that achieve the highest attendance percentage, and award a prize to any child whose attendance is 100% at the end of the school year.



We believe that children learn best when they are active learners. We provide them with experiences and opportunities that allow them to become immersed in what they are doing.



Take a closer look at our learning environment

