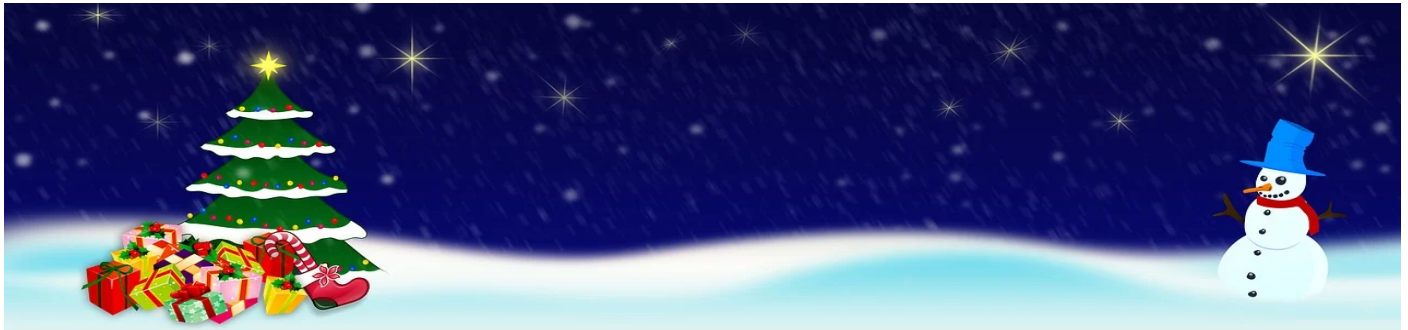


Attendance, Attention and Achievement

Weekly Newsletter

Date: 20th December 2023



Dear Parents/Carers,

The last school day of 2023 brought to a close a glittering season of Christmas events at Essex with the whole school coming out to sing together, Boney M's 1978 classic 'Mary's Boy Child' to a delighted audience of parents. It was a fitting way to end the term with the whole community coming together and showing respect for each other's cultures and beliefs.

Staff have also been overwhelmed at the generosity shown by parents in both donating goods for the Renewal Project's Christmas hampers and also the presents and cards they have been given. We would all like to thank parents for their continued support and wish everyone a happy holiday and peaceful start to 2024.

Please be reminded that school begins on **Thursday 4th January 2024**. Let's all make a New Year's resolution to be **in school on time every day**, we're looking forward to welcoming you all back!

EYFS Nativity

On Monday, the young stars of our reception classes shone brightly on stage as they brought to life the timeless story of the Nativity, for an audience of reception parents and guests. Classes had been rehearsing alongside professional musicians to deliver a fantastic performance. Pupils spoke clearly, knew precisely what to do and sang like angels. Beyond the exceptional performances, the Nativity event was an excellent opportunity for our school community to come together and celebrate the holiday season. Parents and visitors alike were very impressed with our pupils in reception. A heartfelt thank you goes out to our dedicated teachers and staff, who worked tirelessly behind the scenes to ensure the success of this magical performance - well done!



Christmas Carol Concert

This week all the pupils' hard work and efforts in learning, performing and singing came to fruition with the annual Christmas Concert. The Christmas Story was expressed through drama combining the Nativity story with a modern day focus. There was a variety of Christmas songs and traditional carols performed by each year group. The performance also included a rendition of Vive le Vent (Jingle Bells) which was sung tunefully by a selected group of Year 4 children. Furthermore, the Commonwealth Choir sang 'O Little Town of Bethlehem' which also involved two children's solo performances. This collaboration of voices, drama and singing, from Nursery to Year 6, brought the term to a crescendo and a great start to the Christmas vacation. At the end of the school day, pupils joined together outside to sing to parents, family and carers before saying goodbye to friends and staff. It was a truly joyous occasion.



Staff Pantomime

Finally, today came the moment all pupils had been waiting for, the annual Essex pantomime which this year featured the story of Hansel and Gretel. Pupils cheered and booed at the cast of a wicked stepmother and her feckless husband, witches, the good fairy and a terribly handsome and musically talented woodcutter, not to mention our hero and heroine, Hansel and Gretel, even a bird who nearly had them lost forever in the woods. It was very entertaining and we'd like to thank the staff for giving up their time to rehearse.



Star of the week (KS1)

KS1 are extremely proud of the children's achievements.

All of Bumblebee Class	Adhav (Butterfly)	Afran (Beetle)	All of Moth Class
Alesha (Anaconda)	Zayan (Crocodile)	Ajraf (Gecko)	Selma (Tortoise)



Green leaves (KS2)

KS2 are extremely proud of the children's achievements.

Aiza (Vendace)	Abeeha (Lamprey)	Arobi (Halibut)	Samiha (Bluefin)
Sanjida (Kiwi)	Zakira (Grebe)	All of Nightingale class	Casian (Puffin)
The whole class (Baobab)	The whole class (Chestnut)	The whole class (Maidenhair)	Zayan (Redwood)
The whole class (Orchid)	Amra (Clary)	Barbara (Helleborine)	The whole class (Wintergreen)

Walk to School



Classes with the highest percentage of walking:		Classes that have been the most active:	
1st	Maidenhair & Clary (100%)	1st	Rhino pm, Vendace, Kiwi, Maidenhair, Baobab, Clary (100%)
2nd	Orchid (99%)	2nd	Orchid & Wintergreen (99%)
3rd	Chestnut (95%)	3rd	Crocodile (98%)

Attendance Matters!



Every Student, Every School, Every day

Here is our attendance chart. Thank you to all the parents who have sent their children to school during this time. Sending your child to school plays a vital role in your child's development.

Class	%	Class	%	Class	%	Class	%
Nursery Tiger(am)	66.7	Year 1 Bumblebee	87.8	Year 3 Lamprey	86.2	Year 5 Baobab	81.7
Nursery Rhino(am)	88.9	Year 1 Butterfly	85.1	Year 3 Halibut	76.2	Year 5 Redwood	87.9
Nursery Tiger(pm)	66.7	Year 1 Beetle	83.9	Year 3 Bluefin	87.5	Year 5 Maidenhair	83.3
Nursery Rhino(pm)	73.3	Year 1 Moth	81.0	Year 3 Vendace	85.1	Year 5 Chestnut	78.9
Reception Dolphin	85.1	Year 2 Anaconda	87.8	Year 4 Grebe	90.2	Year 6 Orchid	96.2
Reception Vaquita	90.5	Year 2 Crocodile	90.2	Year 4 Puffin	80.0	Year 6 Clary	81.6
Reception Turtle	79.4	Year 2 Gecko	92.2	Year 4 Nightingale	96.7	Year 6 Helleborine	76.4
Reception Penguin	95.2	Year 2 Tortoise	66.7	Year 4 Kiwi	77.0	Year 6 Wintergreen	81.6
Whole School		84.3%					

School Clubs

The Before School club will be opened on 4th and 5th January 2024.

All sports clubs will begin on 8th January 2024.

Mrs Cecilia Mojzes
Executive Head Teacher

Mr Rick Probett
Chair of Governors

Mrs Amber Ilyas
Associate Head Teacher